

Company Introduction

AI can make the world a better place

CONTENTS

01	Company Introduction	-----	p.03
02	Generative AI	-----	p.09
03	Text AI	-----	p.17
04	Vision AI	-----	p.23
05	Digital Twin	-----	p.28
06	Foundation (Core Technologies)	-----	p.31

01

Company Introduction

- 1) Konan Technology
- 2) Clients
- 3) Key Products
- 4) History
- 5) Organizational Chart

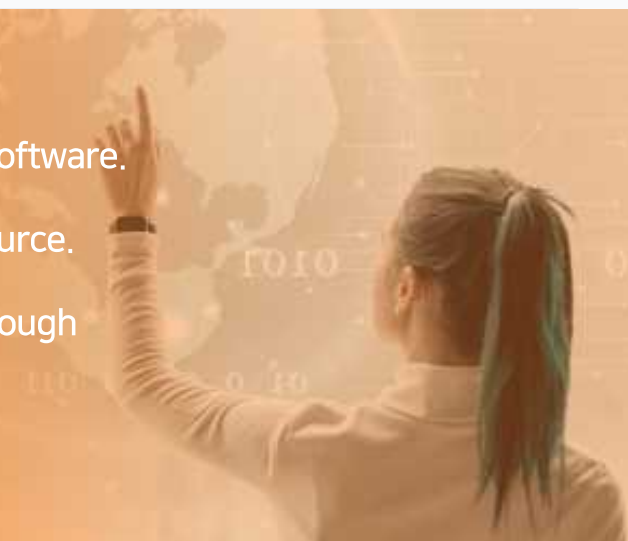
Konan Technology

Konan Technology is a company specializing in Artificial Intelligence software.

We have secured the original AI technologies that are not open source.

Please pay attention to Konan Technology, leading AI business through

“Human-like AIs that see, hear, understand, and speak.”



Company Name	Konan Technology Inc.
CEO	Young Sum Kim
Date of Establishment	April 1999
Core Technologies	Generative AI, Text AI, Vision AI, Digital Twin
Key Products	LLM, RAG-X, AI PC/Server, AI Search/Analytics/Chatbot, AI Video/Speech Processing, AI Pilot, PHM
Number of Employees	213 (as of 2025.7.)
Address	327, Gangnam-daero, Seocho-gu, Seoul
Corporate Type	KOSDAQ-Listed Company

Clients

Konan Technology has served over 2,900 clients across industries—from Hyundai Motor, Samsung Electronics, and SK Telecom to public institutions, financial firms, and media organizations—based on over 25 years of technical expertise and trusted partnerships.

2,900 + Clients

3,400 + Projects

Enterprise



Public



Commerce



Finance



Media

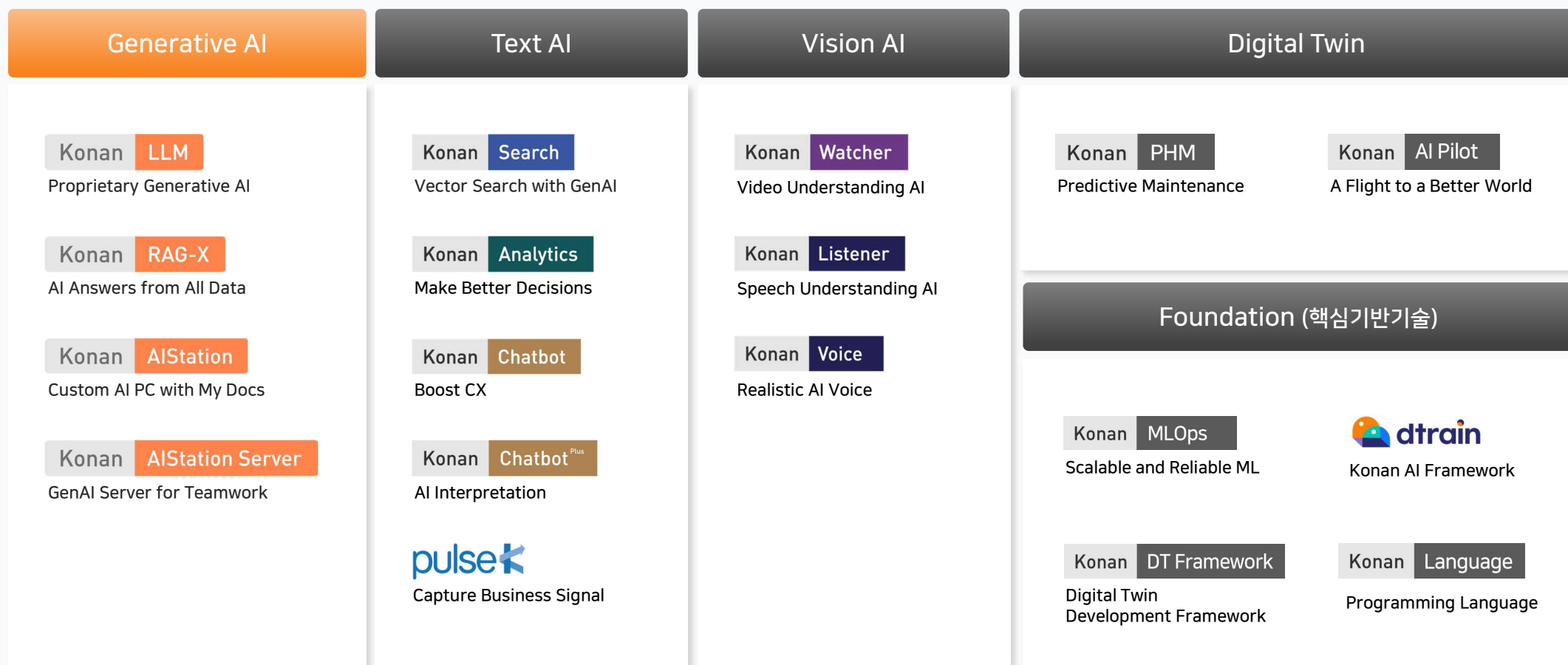


Education



Key Products

Konan Technology offers a wide range of solutions based on its proprietary technologies across 5 key domains: Generative AI, Text AI, Vision AI, Digital Twin, and Foundation Technologies.



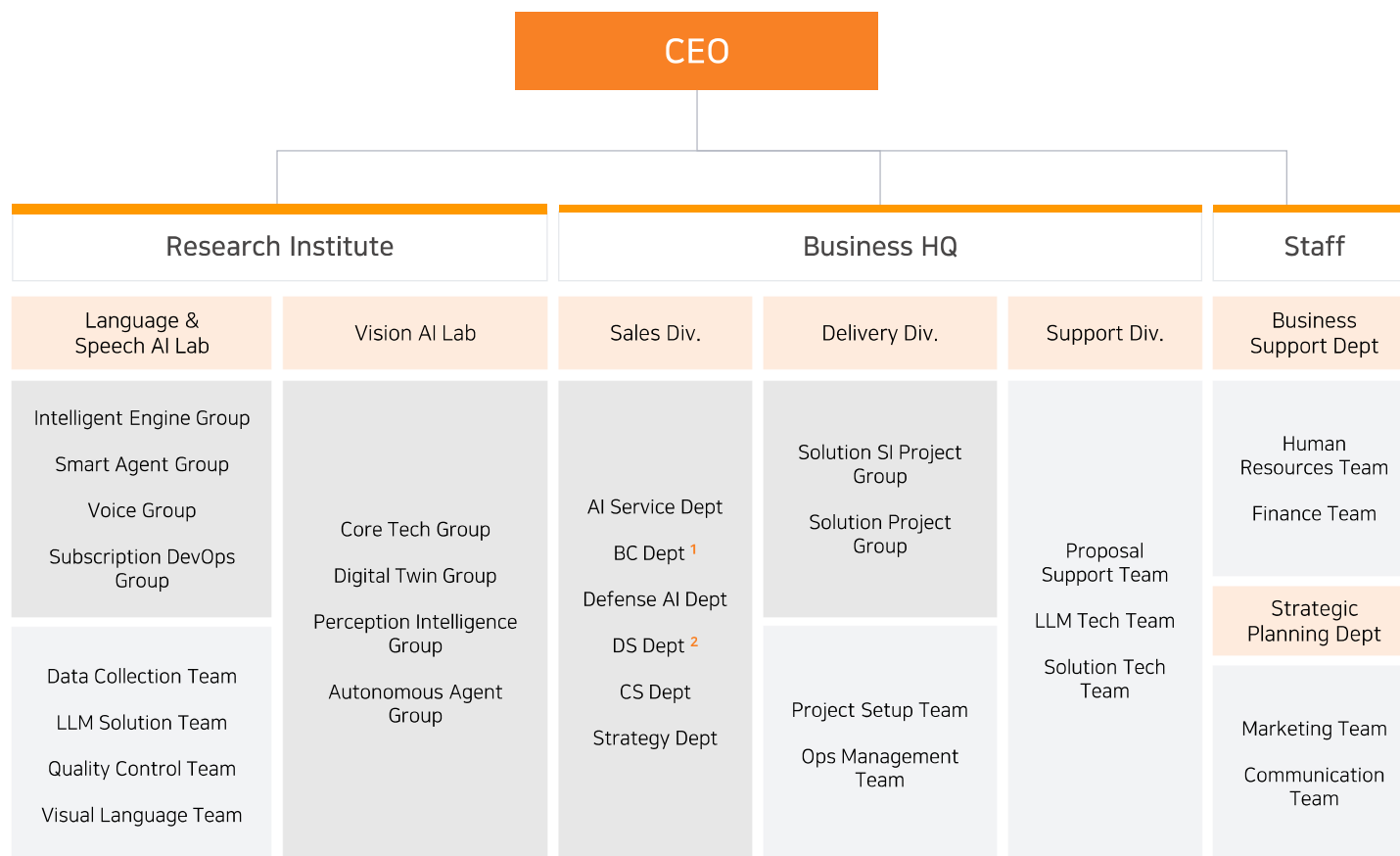
History

Konan Technology has been building unstructured big data analysis and AI technology for the past 24 years. For the next 10 years, we will write a history of leading the AI industry as an AI-specialized company that understands and services all image, voice and text.

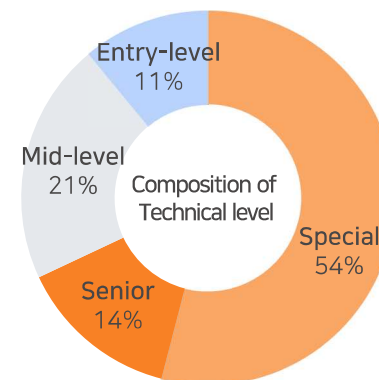
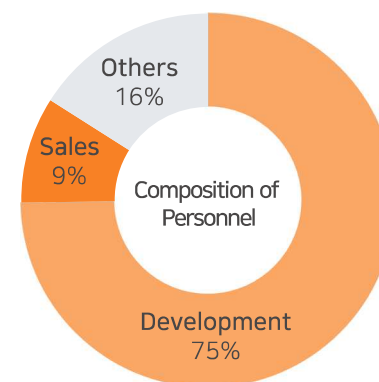


Organizational Chart

Konan Technology is an organization composed of artificial intelligence software experts.



*1.BC Dept =Bigdata Convergence Dept, 2.DS Dept =Data Science Dept



*As of 2025.7, 213 people

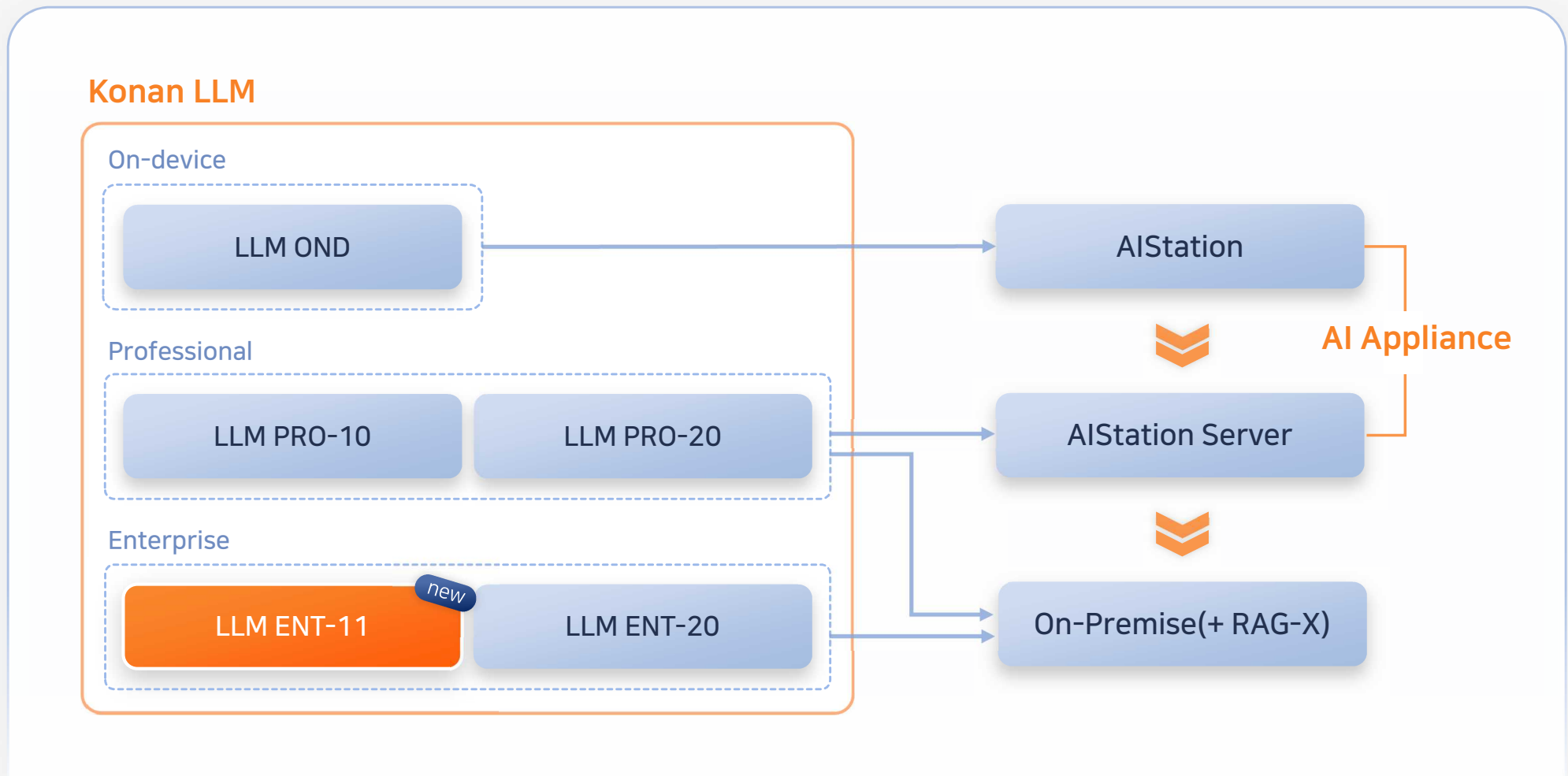
02

Generative AI

- 1) **Generative AI** Lineup
- 2) Proprietary Generative AI, **Konan LLM**
- 3) AI Answers from All Data, **Konan RAG-X**
- 4) **Konan AIStation & AIStation Server**

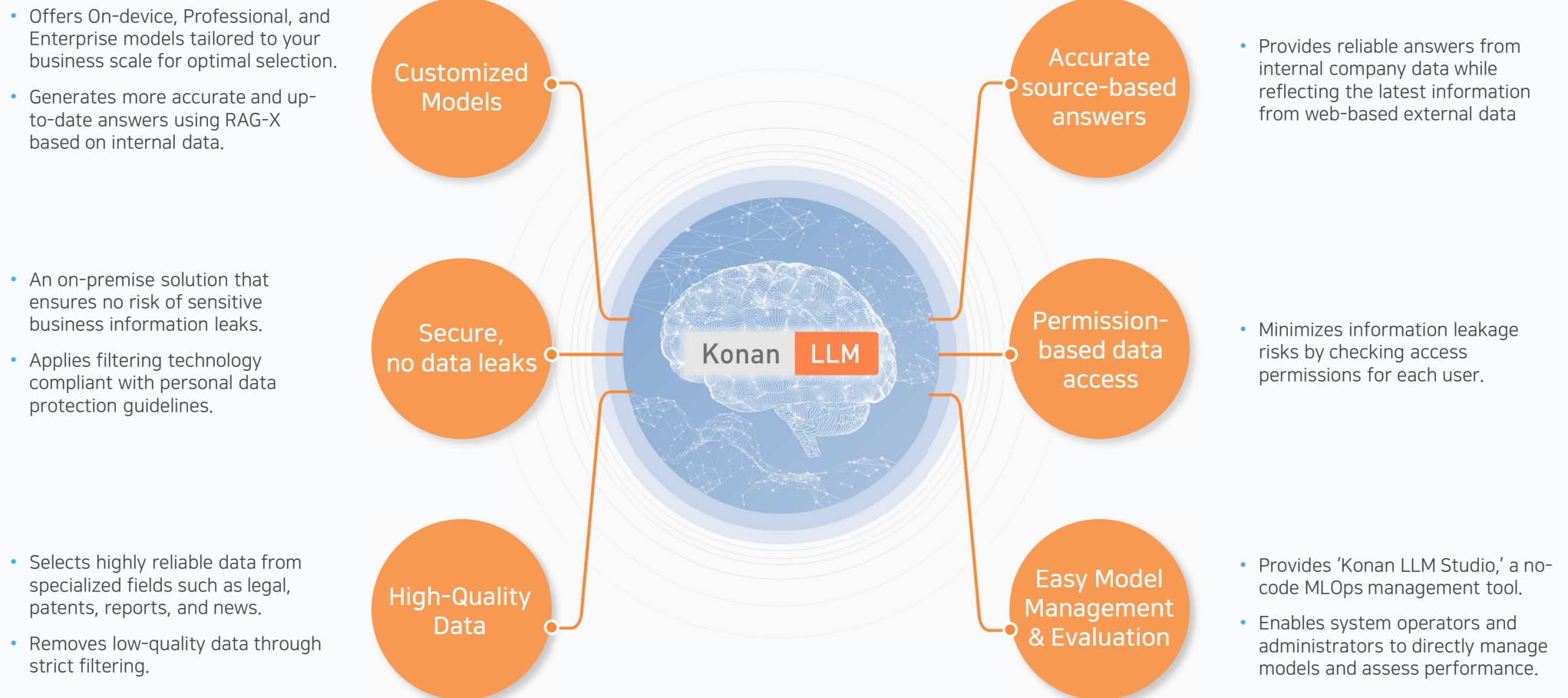
Generative AI Lineup

Based on various Konan LLM models (OND, PRO, ENT), we provide customer-optimized solutions ranging from AI Appliances (AIStation / AIStation Server) to On-Premise (RAG-X) deployments.



Proprietary Generative AI, **Konan LLM**

Konan LLM is an on-premise solution offering models tailored to your business size. It delivers reliable answers by combining internal data with up-to-date web information using RAG and simplifies model operation with a no-code MLOps tool.



Konan LLM Use Cases



Building a Generative AI for Internal Staff

- Collects and trains knowledge in common and specialized public sector areas
- Supports Korean-language report writing, summarization, translation, analysis, coding, and Q&A



Korea's 1st LLM-based patient record integration system

- Developed a RAG-based knowledge consultation platform enabling real-time information retrieval and support for medical staff and faculty

산업분야

회사명

Government Services



Finance Insurance Medical care



Aviation Manufacturing



AI Answers from All Data, **Konan RAG-X**

Konan RAG-X, powered by advanced RAG technology, is a B2B AI platform that delivers answers based on comprehensive search results—from internal documents and databases to real-time websites, online communities, and customer-specific sources.



Konan RAG-X Use Case

A risk management officer at a bank uses Konan RAG-X to create risk reports for specific industries. The solution enables early detection of financial risks to minimize potential losses, while significantly reducing the time and manpower required for report generation.

Risk management report on the construction industry by a bank risk officer



User

"Check our internal database and summarize how loan delinquency rates for construction companies have changed over the past 3 months."

1

Check internal data for early signs of risk



User

"Find performance and capital data of Company A from the Ministry of Land, Infrastructure and Transport, and also search for related materials from the Financial Supervisory Service."

2

Review documents from the specific organization



User

"Summarize any recent news or rumors related to Company A's sales performance and funding status."

3

Search for related news and updates online

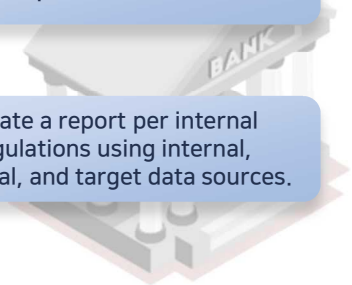


User

"Based on the above information and our internal risk management guidelines, draft a response report for Company A."

4

Create a report per internal regulations using internal, external, and target data sources.

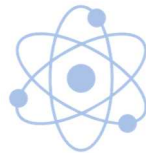


Konan AIStation & AIStation Server

Konan AIStation & AIStation Server is an on-device solution featuring a proprietary Korean LLM and RAG-based generative AI, supporting real-time document workflows offline—from PCs to enterprise servers.

Optimized Technology Performance for Korea

- Achieves high language understanding based on over 25 years of accumulated Korean NLP expertise
- Optimized system design runs on RTX 5090 without requiring multiple GPUs
- Package-based delivery minimizes initial deployment costs



Reliable and Secure Operating System

- Pre-trained on large-scale, high-quality documents to provide superior document handling and responses
- Enhances generation reliability with Retrieval-Augmented Generation (RAG) technology
- Supports air-gapped environments and minimizes data leakage risks with personal information filtering



Fast and Easy Deployment

- Delivered as a pre-configured OS and generative AI software package, ready to use without installation or setup
- Operates independently without internet access, suitable for internal or closed network environments



User-friendly design

- Enables generative AI usage easily without specialized knowledge
- Features an intuitive interface and lightweight architecture for improved accessibility and convenience



Konan AIStation(Server) Use Cases

Konan AIStation & AIStation Server significantly improve efficiency and processing speed across various business areas, including content generation and summarization, AI chatbots, search, data analysis/classification, and translation.



Generation & Summarization

Report drafting

Promotional content drafting

Presentation summarization

Document summarization



AI Chatbot

Knowledge consultation

Response generation

Task assistance

Document-based Q&A



AI Search

Document search

Searching within documents

Custom search for policies·laws·documents

Custom content search



Analysis & Classification

Extracting key insights

Classifying customer intent and usage patterns



Multilingual Translation

Korean

English

Japanese

Chinese

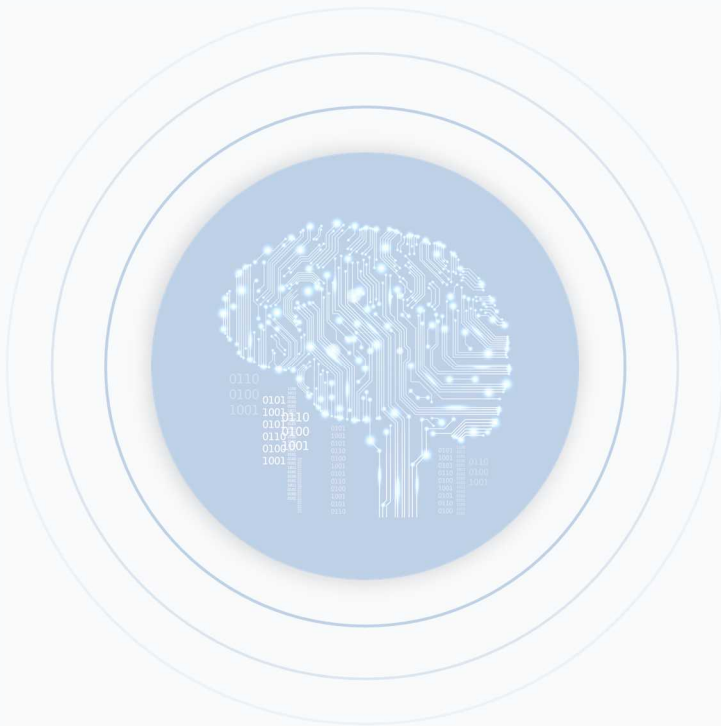
03

Text AI

- 1) Vector Search with GenAI, **Konan Search**
- 2) Make Better Decisions, **Konan Analytics**
- 3) Boost CX, **Konan Chatbot**
- 4) AI Interpretation, **Konan Chatbot +**
- 5) Capture Business Signal, **pulseK**

Vector Search with GenAI, Konan Search

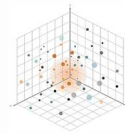
Konan Search supports 'vector search' that understands meaning and context, 'hybrid search' that enhances accuracy by combining vector and keyword methods, and 'Scalable disk-based vector search'.



Vector Search with GenAI, Konan Search

Feature

Neural search-based semantic search



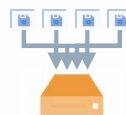
- Vector search enables synonym search without a synonym dictionary
- Image vector search enables similar image search without image captioning

Hybrid Search System



- Increase search accuracy with a hybrid approach that analyzes data with rule-based NLP technology first and then further analyzes data with deep NLP technology

Scalable disk-based vector search



- Disk-based algorithms support Vector Search of Billion-Scale, processing at index speed 9 times faster than open source

Use Cases

Centralized Document Management

A system that allows you to centrally search and manage large amounts of documents distributed within a company.



Job Portal

Provided a robust solution the 1st and 2nd largest online Job Portal in Korea



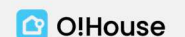
Open Government Portal

2.3 billion document search engine in the information disclosure portal of the Ministry of the Interior and Safety



Lifestyle E-commerce Search

Supports mobile commerce search traffic of 'O!House' with more than 20 million users operate



Make Better Decisions, **Konan Analytics**

Konan Analytics is an 'intelligent text analytics engine' that analyzes structured and unstructured data based on machine learning, artificial intelligence, and data science technologies to discover business insights.



Machine Learning · AI

Perform classification, prediction and summarization based on machine learning and AI-based learning models



Analytics Studio

Easily and intuitively handle complex data processing tasks such as extract-transform-load (ETL) and exploratory data analysis (EDA) using the GUI



Business Insight

A system that assists with quick decisions based on big data in a rapidly changing business environment



Big Data Processing

Promptly analyze large amounts of data that cannot be processed via in-memory method



Data Science

Extract refined knowledge and insights from structured and unstructured data through preprocessing, visualization, and modeling



Deep Natural Language Processing

Performs tasks such as deep learning-based sentiment analysis, text summarization, machine reading comprehension (MRC), and named entity recognition (NER).

코난 애널리틱스 구축사례



Ministry of the Interior and Safety



Ministry of Personnel Management



Ministry of National Defense
Republic of Korea

GS SHOP



kt cs



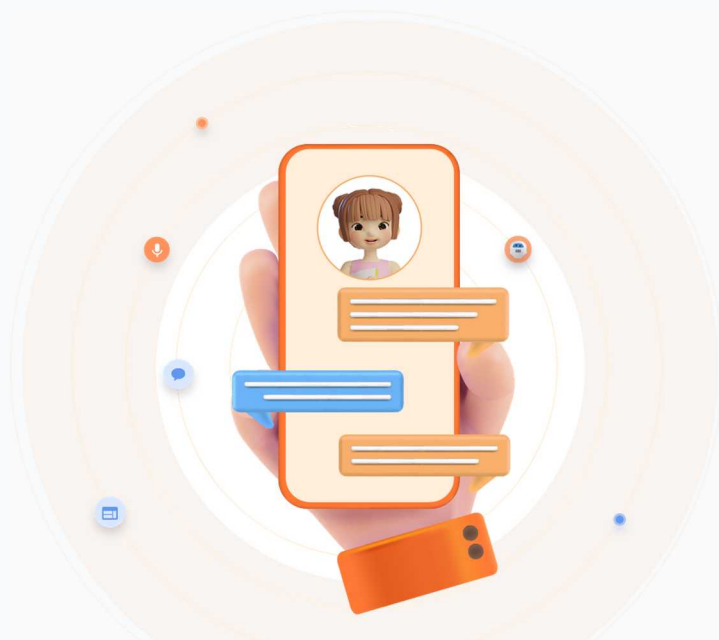
Industrial Bank of Korea

SAMSUNG

⋮

Boost CX, Konan Chatbot

Konan Chatbot is a conversational AI with advanced Korean language understanding, delivering accurate answers through hybrid intent inference. It supports voice interaction and scalable use, enhancing user convenience and experience.



Konan Chatbot
Boost CX

Feature

- Hybrid conversational intent inference

Provides optimal responses to off-script queries through deep learning-based natural language analysis, multi-layer intent inference, and integration with **Konan LLM**.

- Cut conversation data costs

By using **Document AI** technology, conversation data is automatically generated from unstructured documents such as manuals and rulebooks, reducing both time and costs.

- Easy and intuitive development tools

Easily integrate with legacy systems with minimal coding using the '**Conversation Scenario Editor**.'

Technology

- Natural Language Processing (NLP)
- Natural Language Understanding (NLU)
- Document AI

Use Cases

Workplace Services

Operated chatbots in 6 areas including HR, IT, health, production, and finance



National Tax Service

Tax consulting on value-added tax, comprehensive income tax, and year-end tax reporting



Academic Advisors Assistant

Personalized information access (e.g., bills, class schedules, grades)



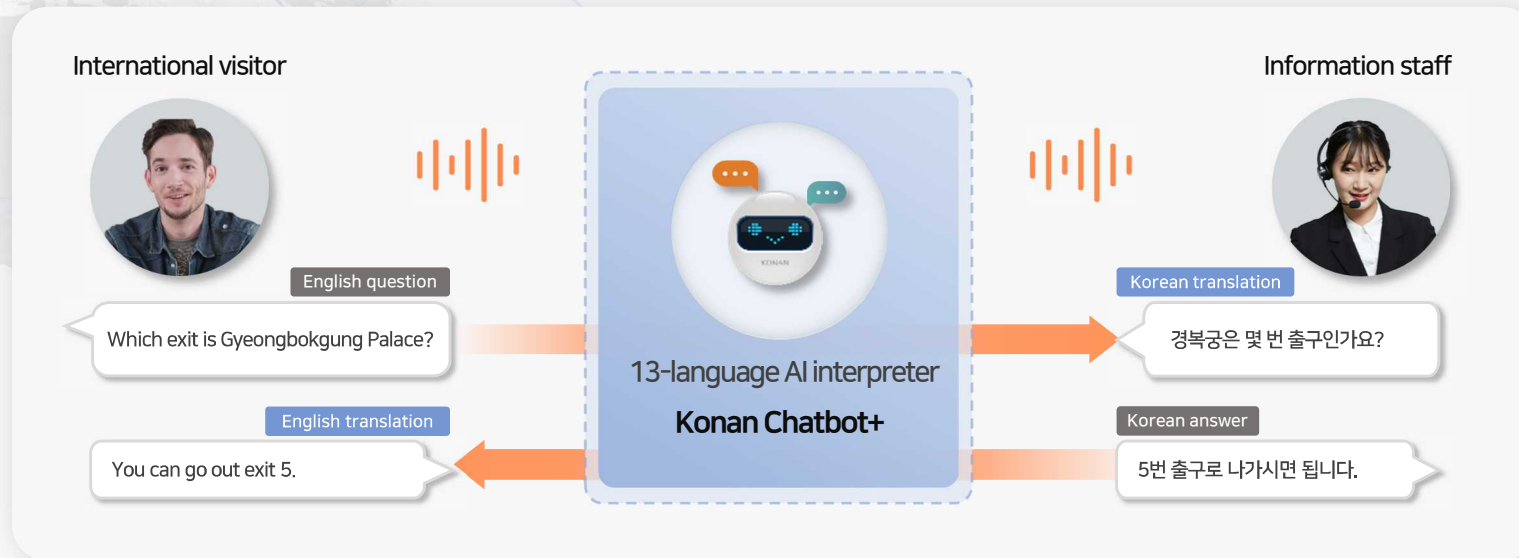
Call Center Chatbot Service

24/7 Voice Phishing Response and Improved Response Rate



AI Interpretation, **Konan Chatbot +**

Konan Chatbot+ is an AI-powered conversational chatbot that combines high-quality speech recognition, machine translation, and natural chatbot technology to enable smooth and convenient communication with foreigners in their native languages.



Service Introduced
at Seoul Myeongdong
and 10 Other Stations



Lotte Department Store
Jamsil: Korea's first to
adopt 'AI Interpretation'



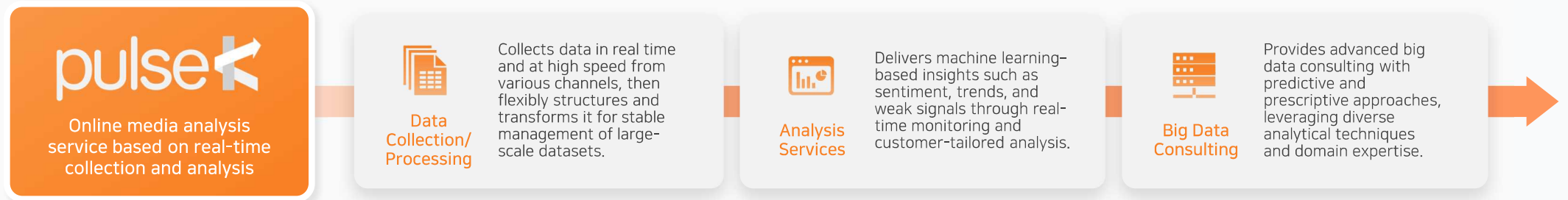
Launch of visualized
consultation service
'Banking for Everyone'



Providing convenience
services for
international students

Capture Business Signal, **pulseK**

pulseK is a real-time analytics service that leverages AI-powered data science to deeply analyze current online issues and uncover valuable business signals.



Use Cases

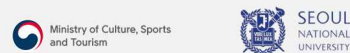
Data Collecting/Processing

- Provided loading data to a social big data system for 'Woori Bank'
- Collects data for research on economic policies and issues at 'KDI(Korea Development Institute)'



Big Data Consulting

- Establishes policy direction by analyzing people's thoughts on 'The Ministry of Culture, Sports and Tourism'
- Seoul National University published '2022 Trend Korea' by researching trends across society and analyzing big data using pulseK.



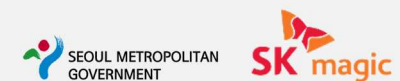
Trend Analysis Service

- 'INNOCEAN' used pulseK to understand the lifestyle and characteristics of the target.
- 'Shinhan Card' used pulseK to analyze social consumption trends and the target's lifestyle.



Analysis Service

- Real-time online monitoring service to discover policy issues and establish communication strategies for 'The Seoul Metropolitan Government'
- 'pulseK' is used for online market research for 'SK Magic' product sourcing.



04

Vision AI

- 1) Video Understanding AI, **Konan Watcher**
- 2) Speech Understanding AI, **Konan Listener**
- 3) Realistic AI Voice, **Konan Voice**

Video Understanding AI, **Konan Watcher**

Konan Watcher is an AI Platform specialized in video processing. It enables the development of various AI applications in defense, safety, and broadcasting by supporting object recognition and anomaly detection within video content.



Feature

- Applied data augmentation and correction techniques to secure training data.
- Extraction and generation of various deep metadata within digital content.
- Automatic subtitle generation for real-time video, combined with high-quality TTS technology at a professional voice actor level.
- An all-in-one workflow for video collection, analysis, processing, tagging, and training.

Technology

- SOTA object detection technologies such as YOLO, Co-DETR, and RT-DETR.
- Flexible Adaptive Object Tracking technology that handles frame drops effectively.
- Speaker-adaptive end-to-end speech recognition and multi-speaker speech synthesis technology.
- Automating model execution, training, evaluation, and deployment via a machine learning pipeline.

Konan Watcher Defense Use Case

Client



Ministry of National Defense
Republic of Korea

Details

- Use case of AI-Based Combat vehicles Operation System Development
- Developed AI recognition models capable of identifying enemy combat equipment.
- Created optimized firepower recommendation models for various scenarios.
- Established an MLOps-based training platform for AI model development.
- Displayed target information and firepower recommendations on a web GIS-based map.
- Developed a drone communication interface for real-time

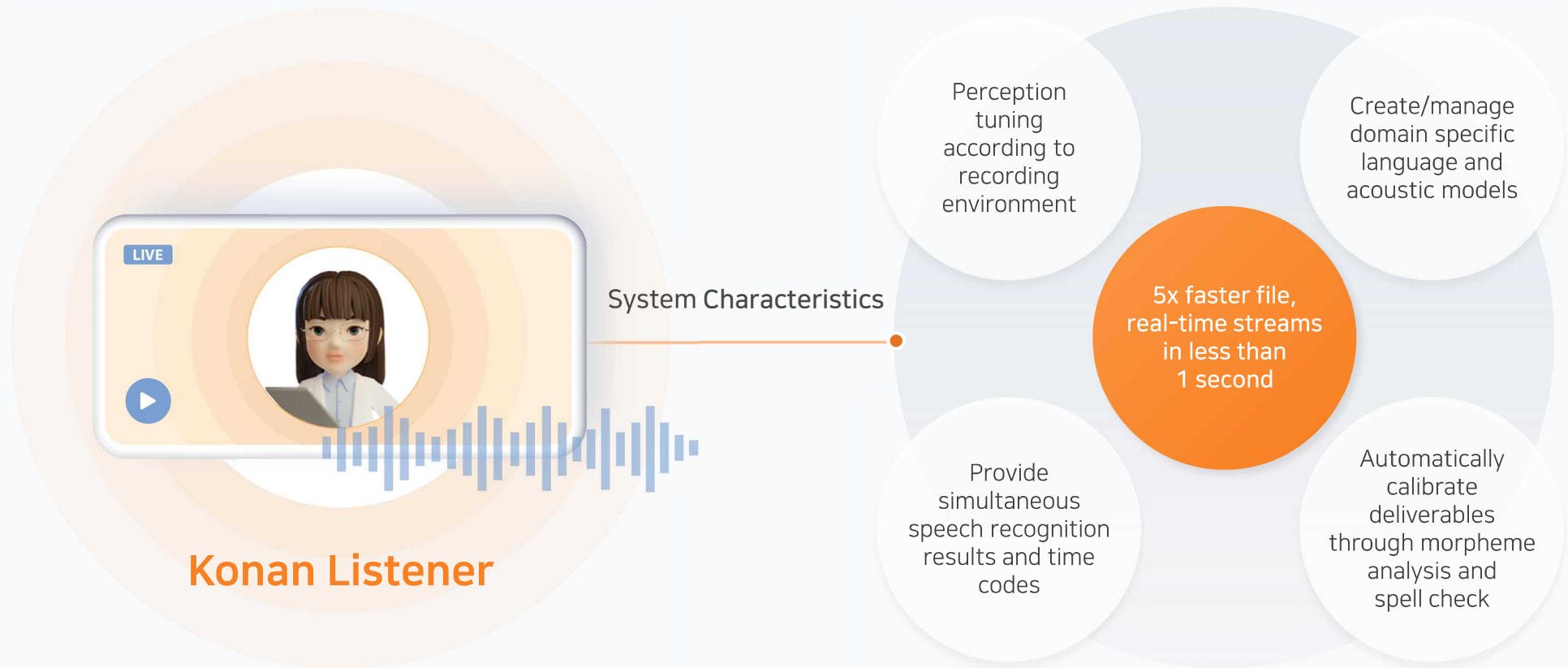
Benefits

- Provides command and control support as an AI advisor for strategic and efficient strike tactics in network-based air and ground combat operations.
- Establishes an MLOps-based AI platform optimized for K-defense.
- Ensures efficient budget allocation in the defense sector, considering the declining domestic population.



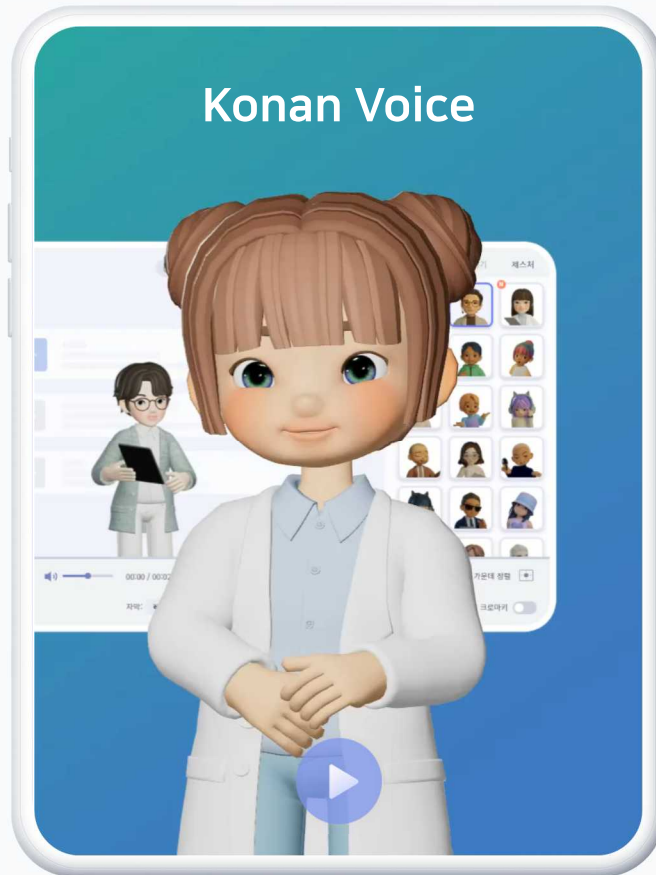
Speech Understanding AI, **Konan Listener**

Konan Listener is a speech recognition solution that recognizes speech in a video, converts it into text, and provides it with a time code. The competitive edge is the ability to automatically correct voice recognition results through in-depth text analysis technology, along with high speed that processes files five times faster and streams in real-time.



Realistic AI Voice, **Konan Voice**

Konan Voice is an end-to-end speech synthesis solution that uses a single neural network technology to synthesize voice waveforms from text inputs instantly. It has the competitive edge to quickly synthesize the most natural high-quality voice.



- 3D characters with 6 facial emotions**
 Type your script text and the 3D character will automatically lip-sync and dubs.(6 emotions available: happy, sad, angry, embarrassed, anxious, and nervous)
- Easy to use**
 High-quality speech synthesis service that generates voices by selecting a voice actor and inputting a script
- High-Quality Voice that Surpasses Professional**
 MOS 4.5+ natural, high-quality voice production capability
 *Mean Opinion Score (MOS): A quality index that subjectively evaluates voice quality into five levels
- Natural Reading that Understands the Context**
 Provides the most natural reading quality by understanding context and meaning, such as spacing correction, sentence closing-ending recognition, postposition correction, and dual expression recognition

05

Digital Twin

- 1) A Flight to a Better World, **Konan AI Pilot**
- 2) Predictive Maintenance, **Konan PHM**

A Flight to a Better World, **Konan AI Pilot**

Konan AI pilot can team up and collaborate with pilots.

It learns and understands missions like a human and can perform high-risk missions on behalf of humans.



**Autonomous
Flight Simulation**

**Team up with
human pilots**

**Installed on an UAV*
to perform high-risk missions**

Features

- Simulated engagement training with human pilots, including many-to-many engagements
- Perform missions for tactical purposes and provide a briefing system to analyze/validate them
- Realistic mission rehearsal and simulation of edge cases* at low cost

*Edge cases: rare situations, extreme situations

Technology

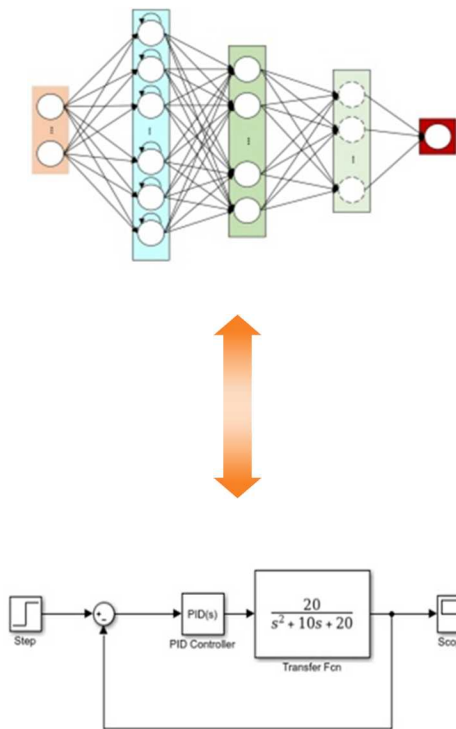
- Autonomous flight simulation utilizing hybrid reinforcement learning
- 3D rendering technology that visualizes real fighters
- Installed on an UAV* to perform high-risk missions instead of humans
- Voice recognition command and control

*UAV: Unmanned Aerial Vehicles

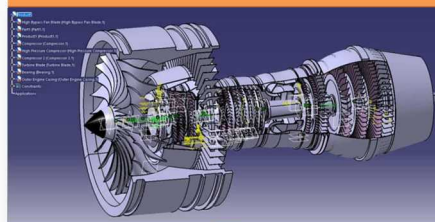
Predictive Maintenance, Konan PHM

Konan PHM is a solution that combines digital twins and AI technologies (PBDL and RL) to help diagnose equipment/component failures and make residual life prediction decisions.

AI-based Physics Simulation



CAD



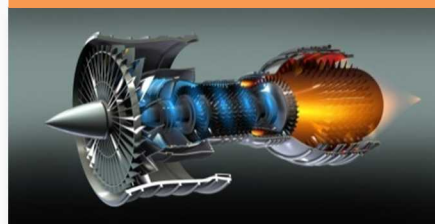
Optimization

3D Visualization



3d models

Real-Time Simulation



Data

Features

- AI analytics service based on Deep Learning
- Monitoring function for faster fault diagnosis and lifetime prediction in the field
- When equipment/parts fail, it helps to find the cause and make decisions to solve it

Technology

- Time Series Sensor Data-Based Deep Learning Diagnostic Algorithm
- Physical Simulation Interlinked Deep Learning (PINN) Algorithm
- Real-time, high-quality visualization
- Digital twin for fault diagnosis/prediction/cause analysis of equipment

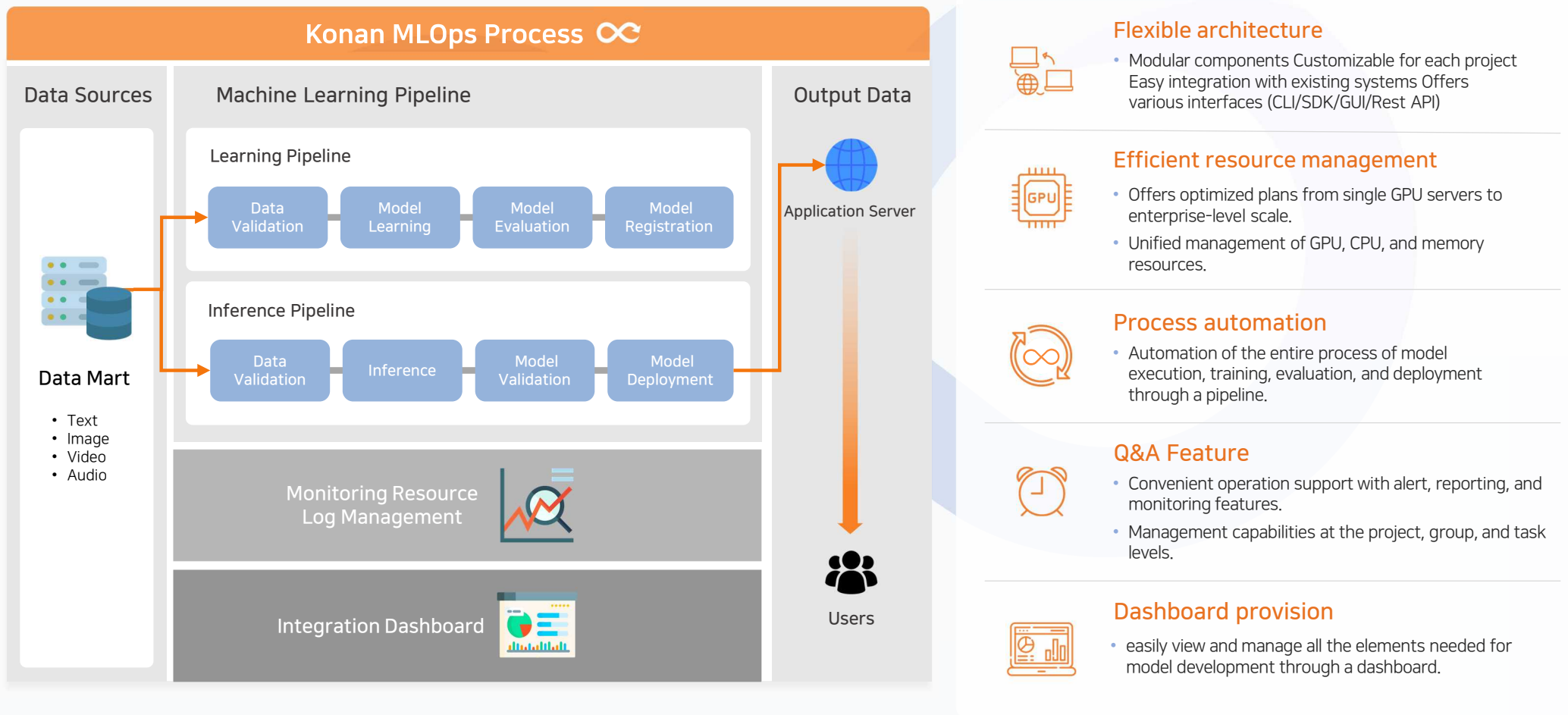
06

Foundation (Core Technologies)

- 1) Konan MLOps
- 2) Konan AI Framework, **dtrain**
- 3) Konan Digital Twin Framework
- 4) Programming Language, **K-Language**

Scalable and Reliable ML, Konan MLOps

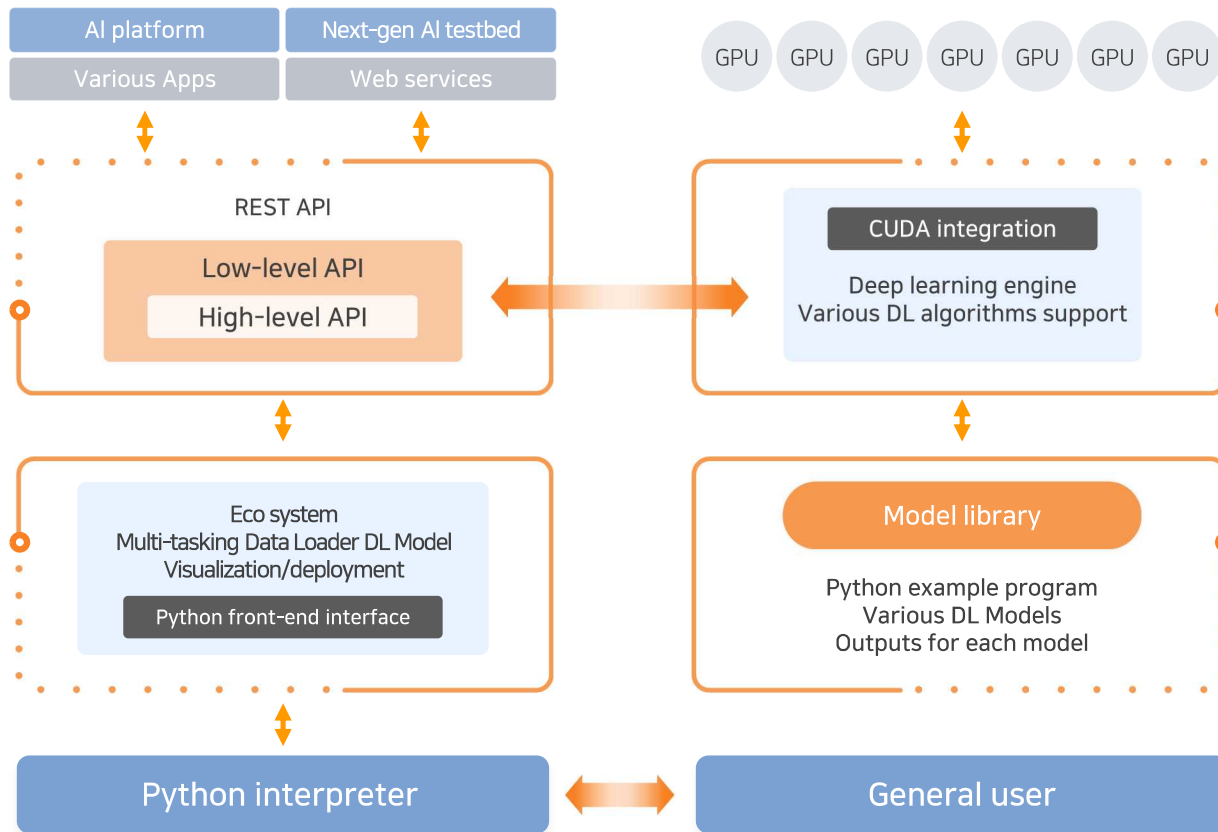
Konan MLOps automates the entire process from deep learning model training to deploying, providing operation convenient. It is also a flexible solution that provides an optimized operating environment tailored to each project's characteristics.



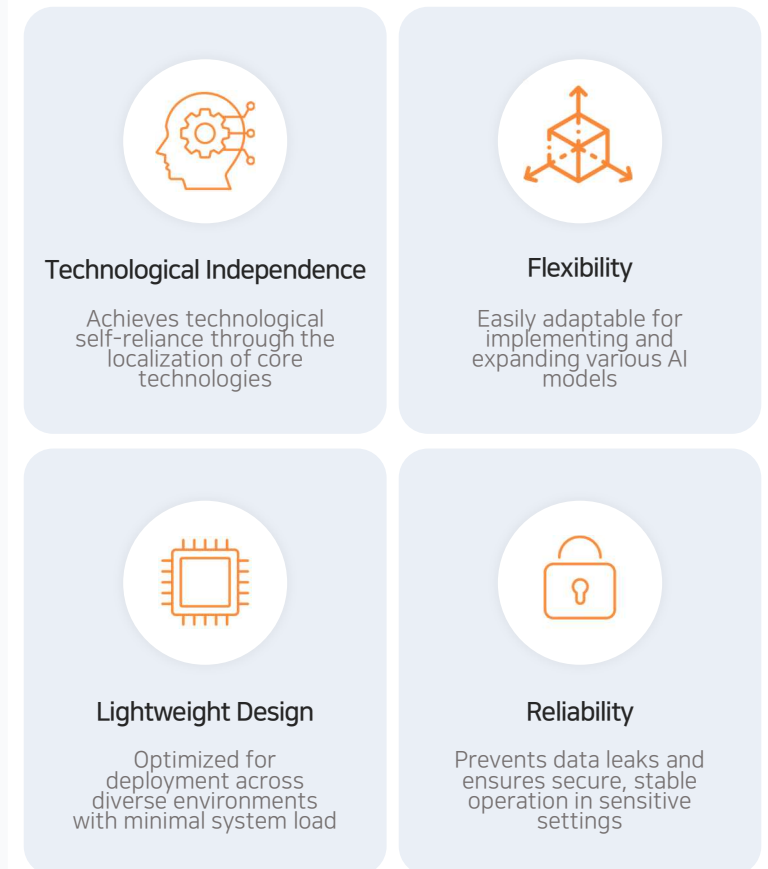
Konan AI Framework, dtrain

dtrain is a deep learning framework developed by Konan Technology. It supports on-premise deployment to prevent data and model leakage, protecting domestic AI from external threats. As a core technology, it meets research and application needs, contributing to AI industry growth.

dtrain Process

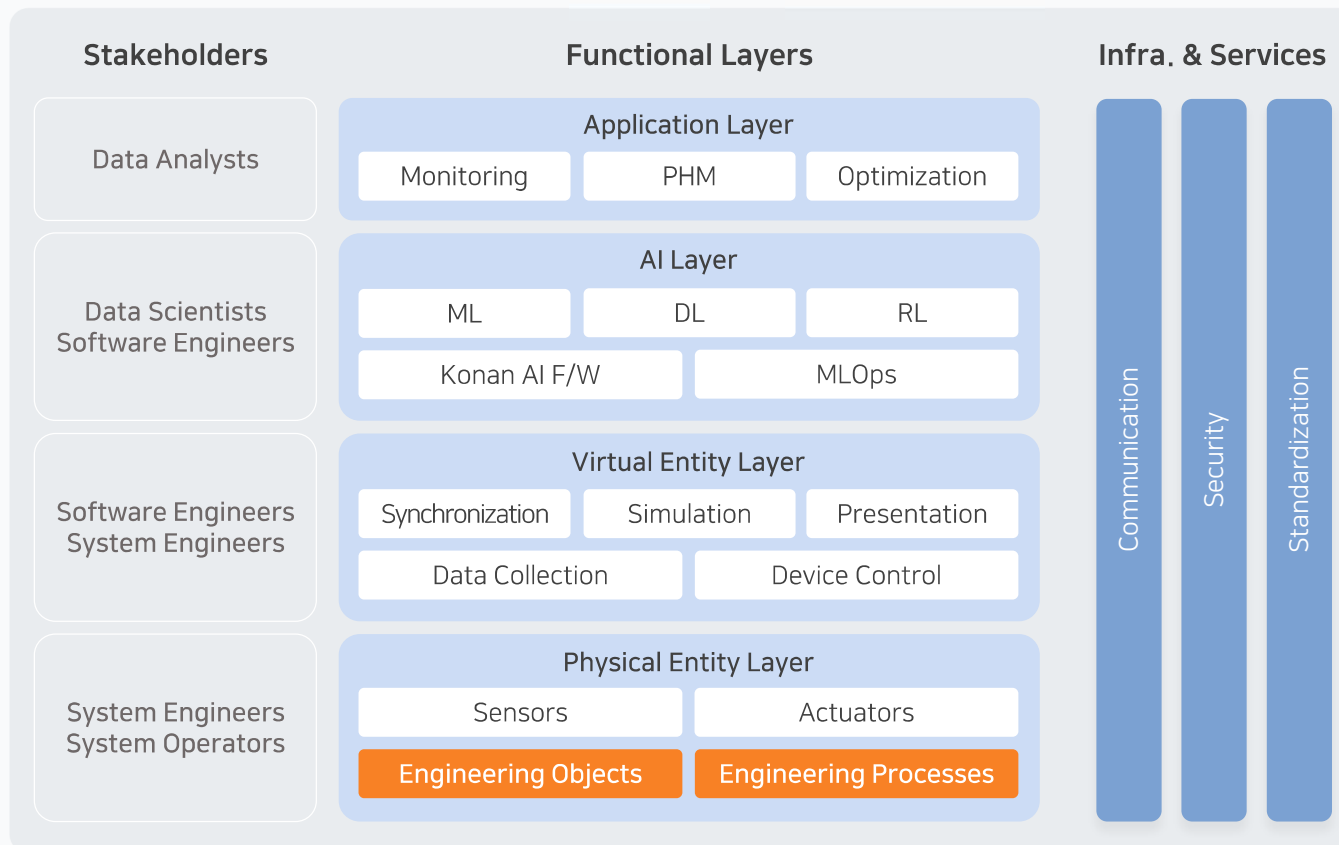


Feature



Konan Digital Twin Framework

Konan Technology is developing a digital twin framework applicable to the aerospace and defense industries. This framework supports system diagnostics, predictions, and optimization tasks through simulations within a digital twin environment.



Feature

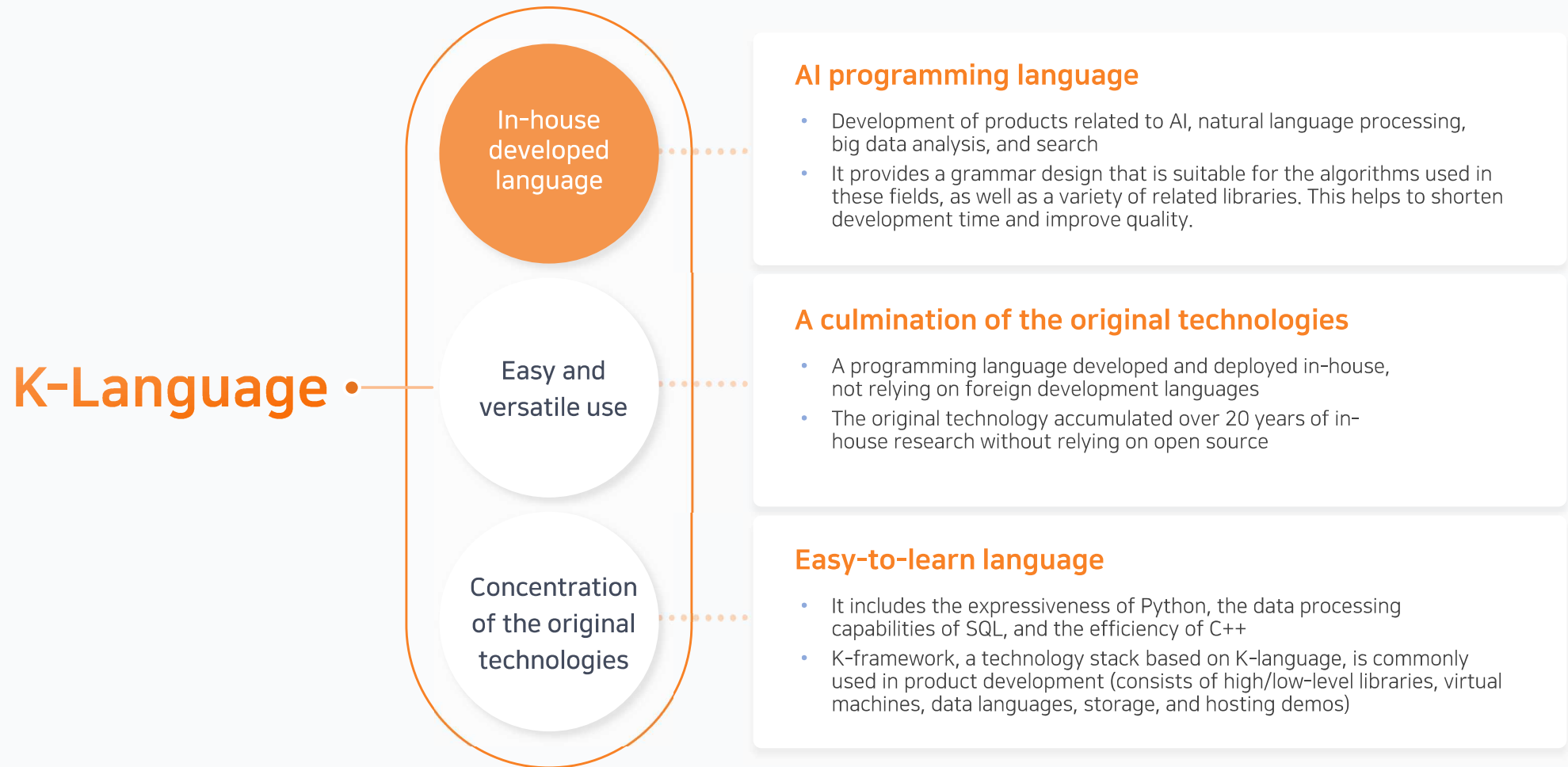
- A high-resolution digital twin development framework for high-quality PLM decision-making.
- ISO 23247 standard framework

Functionality

- Cross Commissioning using Digital Twin
- Interoperability between heterogeneous Digital Twin objects
- Building explainable decision-making application models
- High-speed PINN (Physics Informed Neural Network) inference engine
- Synthetic data generation for AI training
- Hardware-accelerated high-quality visualization

Programming Language, K-Language

K-Language is a programming language developed by Konan Technology for AI and big data development.
It is the foundation technology for all product development in the Text AI field.



Thank you

www.konantech.com
konan@konantech.com
02-3469-8555